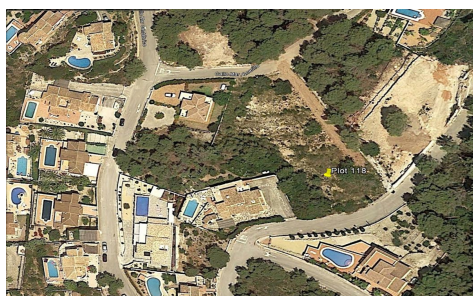




PTJ8393B

## Plot in Javea

€225,000



0



0



N/A



2,031m<sup>2</sup>



N/A

2 adjacent plots for a total of 2031m<sup>2</sup>. Plot 118 is 957m<sup>2</sup> it has green areas at the back and side and superb views across the valley to the Montgo mountain. It is adjacent to plot 114 which is 1074 m<sup>2</sup> and has front and side green areas. El Rafalet residential area is a tranquil location, only a 10 minute drive from all three centres of Javea - the port, Arenal beach and the Old Town - and is an established urbanisation with good infrastructure put in place. All services are available a...(Ask for More Details!)



